

 KENT



R



R 1 Ø42mm H = 59mm # = Ø25mm	R 3 Ø32mm H = 54mm # = Ø19mm	R 5 Ø66mm H = 52mm # = Ø52mm	R 7 Ø85mm H = 55mm # = Ø60mm
R 9 Ø76mm H = 64mm # = Ø65mm	R 10 Ø44mm H = 53mm # = Ø26mm	R 12 Ø64mm H = 58mm # = Ø38mm	R 13 Ø38mm H = 54mm # = Ø17mm
R 16 Ø53mm H = 60mm # = Ø32mm	R 23 Ø51mm H = 66mm # = Ø31mm	R 31 Ø50mm H = 47mm # = Ø24 - 34mm Inner = Ø20mm Depth = 20mm	R 32 Ø57mm H = 66mm # = Ø34mm
R 38 Ø75mm H = 59mm # = Ø45mm	R 39 Ø56mm H = 47mm # = Ø34mm	R 141 Ø141mm H = 65mm # = Ø85mm	R 165 Ø38mm x 2 H = 55mm # = Ø17mm x 2

H = Height # = Effective print area (for reference only)

K



K 1 63 x 32mm H = 26mm D = Ø6mm # = Ø3mm/head	K 7 160 x 53mm/126 x 53mm(90°) H = 36mm # = 160 x 45mm/100 x 45mm(90°)	K 34 141 x 24mm H = 34mm D = Ø10mm # = Ø8mm/10 head	K 101 183 x 90mm H = 36mm D = Ø22mm # = Ø17mm/11 head
K 130 300 x 115mm H = 25mm # = 265 x 85mm	K 152 60 x 70mm H = 28mm # = 11 x 9mm/12 head	K 155A 350 x 24mm H = 17mm	K 169 135 x 68mm H = 32mm D = Ø13mm # = Ø10mm/21 head
K 206 126 x 90mm H = 24mm # = 26 x 16mm/12 head	K 208 102 x 24mm H = 25mm Ø43 x 33mm H = 42mm # = 98 x 18mm & Ø35mm	K 211 212 x 32mm H = 35mm D = Ø29mm # = Ø10mm/10 head	K 222 145 x 53mm H = 26mm # = 75 x 6mm/3 head
K 223 63 x 36mm H = 43mm D = Ø10mm # = Ø6mm/4 head	K 225 31 x 20mm H = 26mm # = Ø2mm/2 head	K 234 50 x 50mm H = 28mm D = 11mm # = Ø8mm	K 235 Ø55mm H = 71mm Inner = Ø31mm # = Ø34 - 49mm

H = Height D = Diameter of each cavity # = Effective print area (for reference only)

PP

PP 71



355 x 50mm
H = 60mm # = 310 x 30mm

PP 72



372 x 50mm
H = 61mm # = 310 x 30mm

PP 74A



305 x 26mm
H = 34mm # = 280 x 16mm

PP 76



345 x 25mm
H = 34mm # = 330 x 18mm

PP 77



310 x 30mm
H = 33mm # = 280 x 28mm

PP 79



353 x 63mm
H = 58mm # = 310 x 50mm

PP 82



305 x 60mm
H = 46mm # = 270 x 45mm

PP 85



230 x 92mm
H = 63mm # = 200 x 70mm

PP 88



310 x 58mm x 2 H = 42mm
= 270 x 30mm x 2

PP 101



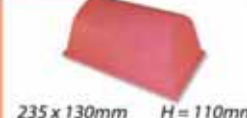
109 x 63mm
H = 46mm # = 85 x 45mm

PP 104



680 x 130mm H = 115mm
= 575 x 80mm

PP 105



235 x 130mm H = 110mm
= 150 x 80mm

PP 108



155 x 31mm
H = 39mm # = 110 x 25mm

PP 113



298 x 65mm
H = 71mm # = 280 x 48mm

PP 115



87 x 47mm H = 40mm
= 7 x 78mm x 2

PP 116



80 x 68mm x 2 H = 53mm
= 17 x 50mm x 2

H = Height

= Effective print area (for reference only)



S / SPM

S 41



52 x 32mm
H = 54mm # = 45 x 25mm

S 47



88 x 68mm
H = 46mm # = 68 x 48mm

S 48



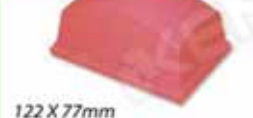
112 x 55mm
H = 50mm # = 92 x 30mm

S 53



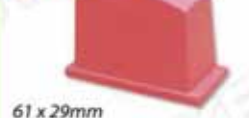
73 x 73mm
H = 69mm # = 53 x 53mm

S 55



122 x 77mm
H = 68mm # = 102 x 57mm

S 61



61 x 29mm
H = 56mm # = 41 x 20mm

S 82



62 x 46mm
H = 62mm # = 42 x 26mm

S 133



110 x 80mm
H = 86mm # = 90 x 60mm

S 140



54 x 50mm
H = 46mm # = 38 x 27mm

S 141



85 x 120mm
H = 92mm # = 90 x 70mm

SPM 01



14 x 14mm
H = 22mm # = 12 x 12mm

SPM 02



14 x 23mm
H = 24mm # = 12 x 20mm

SPM 03



14 x 30mm
H = 24mm # = 12 x 26mm

SPM 04.01



8 x 12mm
H = 22mm # = 6 x 10mm

SPM 05



14 x 40mm
H = 25mm # = 12 x 36mm

SPM 29



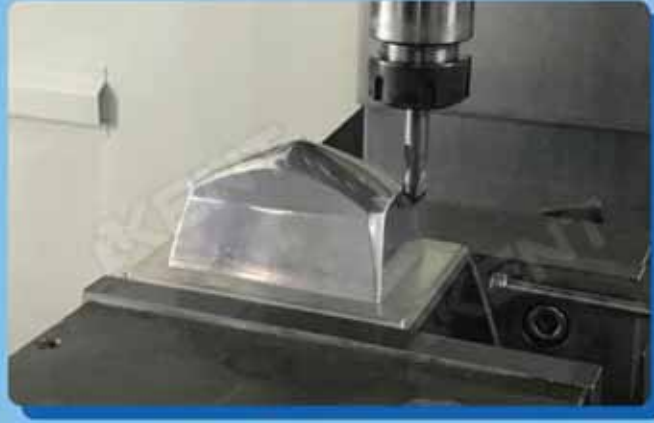
18 x 25mm
H = 27mm # = 15 x 24mm

H = Height

= Effective print area (for reference only)



All Pad Design and Production In House



Precise Pad Mould Cut by CNC



CMM (Coordinate Measuring Machine) 3D Measurement



Professional Digital Drawing / Design



K2A Specially Developed Anti-static Printing Pad



- Anti-static, amazing ink pick up/release ability.
- High elasticity to absorb high printing pressure - No distortion.
- Long life, up to 300% more !
- Stable pad hardness.
- Eliminate air bubble, pinhole, hairline and ghost shadow problems.

Complete Solution :



Pinhole problem



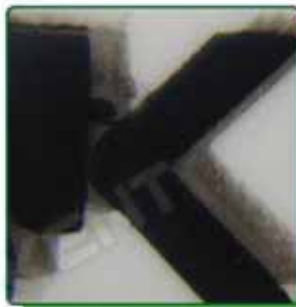
Solved by Anti-static pad



Hairline problem



Solved by Anti-static pad



Ghost shadow



Solved by Anti-static pad



Print distortion



Solved by Anti-static pad

Pad Material



K3 :

An economy silicone pad material at good price, available in wide range pad hardness.



TK :

One of the conventional silicone pad materials in the market. Moderate durability. Generally available in 20° (red) and in 30° (off-white) hardness.



K1 :

A high end silicone pad material in the conventional market. Versatile for comprehensive printing jobs.



K2A :

An innovative Anti-Static silicone pad material. Amazing ink pick up / release ability. High elasticity to absorb high printing pressure and extra long life. Eliminate common printing problems. Ideal for High quality print in high end market.

KENT ENGINEERING CO., LTD.

(Hong Kong) Tel : 852-2424 1899 Email : info@kent.com.hk

KENT ENGINEERING (GAO YAO) CO., LTD.

(Zhaoqing) Tel : 0758-8512 888 Email : kentgy@kentchina.com
 (Dongguan) Tel : 0769-8777 2010 Email : kentsg@kentchina.com
 (Wuxi) Tel : 0510-8522 0330 Email : kentsh@kent-pp.com.cn
 (Tianjin) Tel : 022-2795 8928 Email : kentti@kent-pp.com.cn



www.kentpp.com

0525-0721