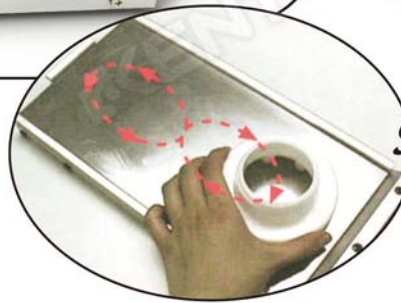


Kit includes:

- Kent Lapping Platform
- Kent Lapping Compound
- Kent Lubrication Oil



Simple operation!

Reconditioning of CMIC is just a simple ink cup lapping procedure, for roughly 5 minutes only. *The purpose is to keep the Ceramic Ring Edge sharp and flat.* CMIC can always at it's best performance.

Specially when any of the following 3 occassion happened.

1. When change from thin steel plate to 10 mm plates.



2. Ink leak is found during normal printing.



3. CMIC is not cleaning die plate as clear as before.

