

 KENT

КС ТР

g



GREEN PAD PRINTING

# KCTP-F20

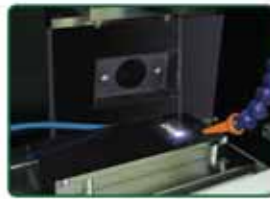
## High Precision Fiber Laser Engraving Machine

- 100% designed for Green Pad Printing
- State-of-the-art KENT control software the "VR.01"

Not like hundreds of ordinary Laser Marking machine in the market, the KENT KCTP-F20 Computer - to - Plate laser engraving machine is designed to engrave Pad Printing Plates for Industrial applications.



Computer graphic



Laser engrave Green plate



Pad printing

KCTP-F20 not only cut plate and processing cost by 2/3 it also increase pad printing efficiency and protect environment by eliminating : Film positives Coating emulsion Developing liquid, Cleaning agents, Corrosive etching acids and other chemicals.



### FEATURES

- Up to 250 lpi resolution solid prints
- 175 lpi for half-tone 4 color process images
- Long plate life up to 30,000 prints\*  
[\*Plate life time parameter bases on objective factors (e.g. image size / mesh dots, image resolution, ink type / pigment size/density and ink cup condition)]
- Able to engrave 10 mm steel plate
- Powerful IPG 20W Fiber laser head
- Advance control software **KENT VR.01**
- Eco-friendly : eliminate film positives, alcohol, acid and chemicals
- Fast graphic set up, fast engraving
- Multiple images per plate, cut plate cost
- Precision "dead-on" platform in line with any KENT printer
- Handy linking to lap top computer through USB plug

### SPECIFICATIONS

Laser :	Fiber laser 20W
Wavelength :	1062nm
Software :	inclusive, installation for Chinese, English, German or Japanese interface
<b>KENT VR.01</b>	
Support :	win7 (32 bit & 64 bit), win10
Handle files :	.ai, .dxf, .tiff, .plt, .eps...
Min. line width :	0.03 mm (0.02 mm optional)
Min. character size :	0.2 mm
Plate size :	80 x 160 mm & 100 x 250 mm (150 x 300-350 mm, 200 x 400-600 mm optional)
Data transfer:	USB 2.0
Marking area :	100 x 100 mm
Cooling :	Air cooling system
Dimension (LxWxH) :	700 x 950 x 1,200 mm
Weight :	218 kg



- Fume extractor with professional HEPA filter



- Vacuum platform (Absolute flatness for high quality requirement)



# KCTP-F30

## Innovative Optic Fiber Laser Head

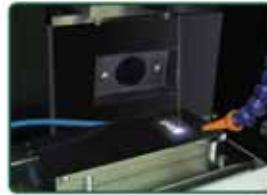


- 100% designed for Green Pad Printing

Not like hundreds of ordinary Laser Marking machine in the market, the KENT KCTP-F30 Computer - to - Plate laser engraving machine is designed to engrave Pad Printing Plates for Industrial applications.



Computer graphic



Laser engrave Green plate



Pad printing

KCTP-F30 not only cut plate and processing cost by 2/3 it also increase pad printing efficiency and protect environment by eliminating : Film positives Coating emulsion Developing liquid, Cleaning agents, Corrosive etching acids and other chemicals.



### FEATURES

- Up to 250 lpi resolution solid prints
- 175 lpi for half-tone 4 color process images
- Long plate life up to 30,000 prints\*  
[\*Plate life time parameter bases on objective factors (e.g. image size / mesh dots, image resolution, ink type / pigment size/density and ink cup condition)]
- Able to engrave 10 mm steel plate
- Innovative Optic Fiber laser head
- Advance control software
- Eco-friendly : eliminate film positives, alcohol, acid and chemicals
- Fast graphic set up, fast engraving
- Multiple images per plate, cut plate cost
- Precision "dead-on" platform in line with any KENT printer
- Handy linking to lap top computer through USB plug

### SPECIFICATIONS

Laser :	Fiber laser 20W
Wavelength :	1062nm
Support :	win7 (32 bit & 64 bit), win10
Handle files :	.ai, .dxf, .tiff, .plt, .eps...
Min. line width :	0.03 mm (0.02 mm optional)
Min. character size :	0.2 mm
Plate size :	80 x 160 mm & 100 x 250 mm (150 x 300-350 mm, 200 x 400-600 mm optional)
Data transfer:	USB 2.0
Marking area :	100 x 100 mm
Cooling :	Air cooling system
Dimension (LxWxH) :	700 x 950 x 1,200 mm
Weight :	218 kg



- Fume extractor with professional HEPA filter



- Vacuum platform (Absolute flatness for high quality requirement)

# KCTP-F10



## High Precision Fiber Laser Engraving Machine

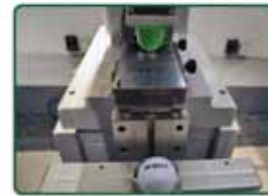
- 100% designed for Green Pad Printing
- State-of-the-art KENT control software the "VR.01"



Computer graphic



Laser engrave Green plate



Pad printing



### FEATURES

- Up to 250 lpi resolution solid prints
- 175 lpi for half-tone 4 color process images
- Long plate life up to 30,000 prints\*  
[\*Plate life time parameter bases on objective factors (e.g. image size / mesh dots, image resolution, ink type / pigment size/density and ink cup condition)]
- Powerful IPG 10W Fiber laser head
- Advance control software **KENT VR.01**
- Eco-friendly : eliminate film positives, alcohol, acid and chemicals
- Fast graphic set up, fast engraving
- Multiple images per plate, cut plate cost
- Eye protection window
- Granite stone platform ensure precision engrave accuracy
- Precision "dead-on" platform in line with any KENT printer
- Handy linking to lap top computer through USB plug

### OPTIONAL



- Fume extractor with professional HEPA filter



- 150 x 300 mm platform (Engraving area : Ø100 mm for 150 x 300 mm plate)

### SPECIFICATIONS

Laser :	Fiber laser 10W
Wavelength :	1060nm
Software :	inclusive, installation for Chinese, English, German or Japanese interface
<b>KENT VR.01</b>	
Support :	win7 (32 bit & 64 bit), win10
Handle files :	.ai, .dxf, .tiff, .plt, .eps...
Min. line width :	0.03 mm (0.02 mm optional)
Min. character size :	0.2 mm
Plate size :	80 x 160, 100 x 250 mm (150 x 300 mm optional)
Data transfer:	USB 2.0
Engraving area :	Ø80 mm (for 100 x 250 mm plate)
Cooling :	Air cool
Dimension (LxWxH) :	425 x 836 x 502 mm
Weight :	70 kg



# KCTP-F10 (Economy Version)

## Fiber Laser Engraving Machine



- 100% designed for Green Pad Printing



Computer graphic



Laser engrave Green plate



Pad printing



### FEATURES

- Up to 250 lpi resolution solid prints
- Long plate life up to 30,000 prints\*  
[\*Plate life time parameter bases on objective factors (e.g. image size / mesh dots, image resolution, ink type / pigment size/density and ink cup condition)]
- Powerful 20W Fiber laser head (China made)
- Advance control software
- Eco-friendly : eliminate film positives, alcohol, acid and chemicals
- Fast graphic set up, fast engraving
- Multiple images per plate, cut plate cost
- Eye protection window
- Precision "dead-on" platform in line with any KENT printer
- Handy linking to lap top computer through USB plug

### OPTIONAL



- Fume extractor with professional HEPA filter



- 150 x 300 mm platform (Engraving area : Ø100 mm for 150 x 300 mm plate)

### SPECIFICATIONS

Laser :	Fiber laser 20W
Wavelength :	1060nm
Software support :	win7 (32 bit & 64 bit), win10
Handle files :	.ai, .dxf
Min. line width :	0.03 mm (0.02 mm optional)
Min. character size :	0.2 mm
Plate size :	80 x 160, 100 x 250 mm (150 x 300 mm optional)
Data transfer:	USB 2.0
Engraving area :	Ø80 mm (for 100 x 250 mm plate)
Cooling :	Air cool
Dimension (LxWxH) :	425 x 836 x 502 mm
Weight :	70 kg

# New Era for Green Pad Printing Computer - to - Plate by Laser engraving



Computer graphic



**Fiber Optic Laser**  
Direct engrave printing plate



**10 mm Steel Plate**  
Long life

- Cut plate and production cost up to 80%
- Cut plate making labour and time
- No film, developer, emulsion, etching acid and chemicals
- Less process, less labour
- Less worker insurance compensation

For fast job change from graphic to final print





# New Era for Green Pad Printing Computer - to - Plate by Laser engraving



**Green Plate (MGP)**  
Low cost, easy handling



**Green Cup**

No ink cleaning for job or color change

# Patent : 200910131958.3

# Patent : HK1123448



Pad printing



More efficient and environmental friendly **Green Printer**

- 10 times longer than polymer plate life
- Just-in-time plate making
- 100% free pollution concept, less wastage, less CO2 emission
- Safer and healthier work environment

## Fast job turn around

- With unique KENT Dead-on Quick Job Change System

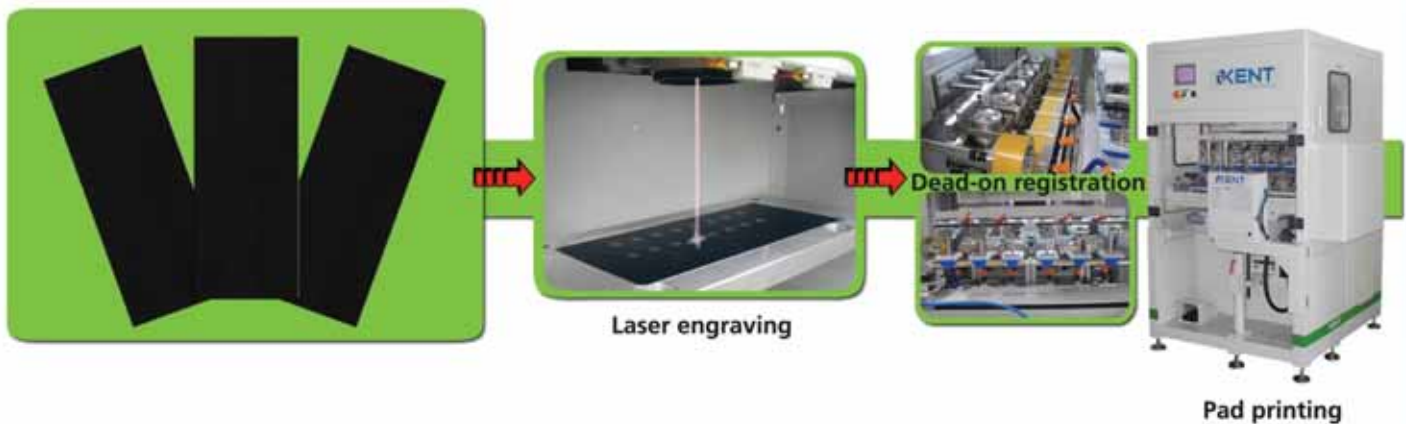


- No skill technician needed
- No machine adjustment
- Accurate
- Simplify process

# Green Plate (MGP) (Laser engraved printing plate)

## High quality print and Eco-friendly solution for Pad Printing

- Direct computer graphic to laser engrave pad printing plate
- No positive film, no chemicals, no acid, no alcohol needed
- "Just In Time" no waiting, instant plate making
- Easy storage regardless of temperature or storage condition
- Superior resolution quality by KCTP-F20 / F10
- Image resolution up to 175 lpi
- Able to engrave halftone with RIP
- Long plate life up to 30,000\* prints
- Superior plate cleaning by KENT TCIC ink cup or Green cup
- Able to put 2 images per plate



### Cost Savings :

- Able to put 2 images per plate, save another 60% per plate
- Eliminate positive films cost
- Eliminate steel plate exposing, developing and etching cost
- Save all labour and process for steel chemical etching
- Save half hour to make MGP
- Save all environment issue from chemical etching



### Comparison Chart :

	KENT MGP	Polymer
Plate life	Up to 30,000 *	5,000
Depth control	+/- 3 µm	+/- 5 µm

### KENT MGP sizes :

70 x 500 mm	80 x 180 mm
100 x 250 mm	150 x 300 mm
200 x 350 mm	Different sizes available

\* Plate lifetime parameter bases on objective factors (e.g. Image size / mesh dots, image resolution, ink type / pigment size / density).



## Green Plate (MGP)

Vs

## Thin Steel Plate / 10 mm Steel Plate / Polymer Plate

### Process and Analysis :

	KENT MGP	Thin Steel Plate	10mm Steel Plate	Polymer Plate
Life time *	Up to 30,000	50,000 - 80,000	500,000	2,000
Film positive	NO		YES	YES
Emulsion coating	NO		YES	YES
Exposure process	NO		YES	YES
Developing process	NO		YES	YES
Etching process	NO		YES	NO
Chemical cost	Scrub wash cream	- Film positive - Developer - Emulsion - Etching acid		Film positive, water / alcohol
Baking	NO		✓	60°C 30 minutes

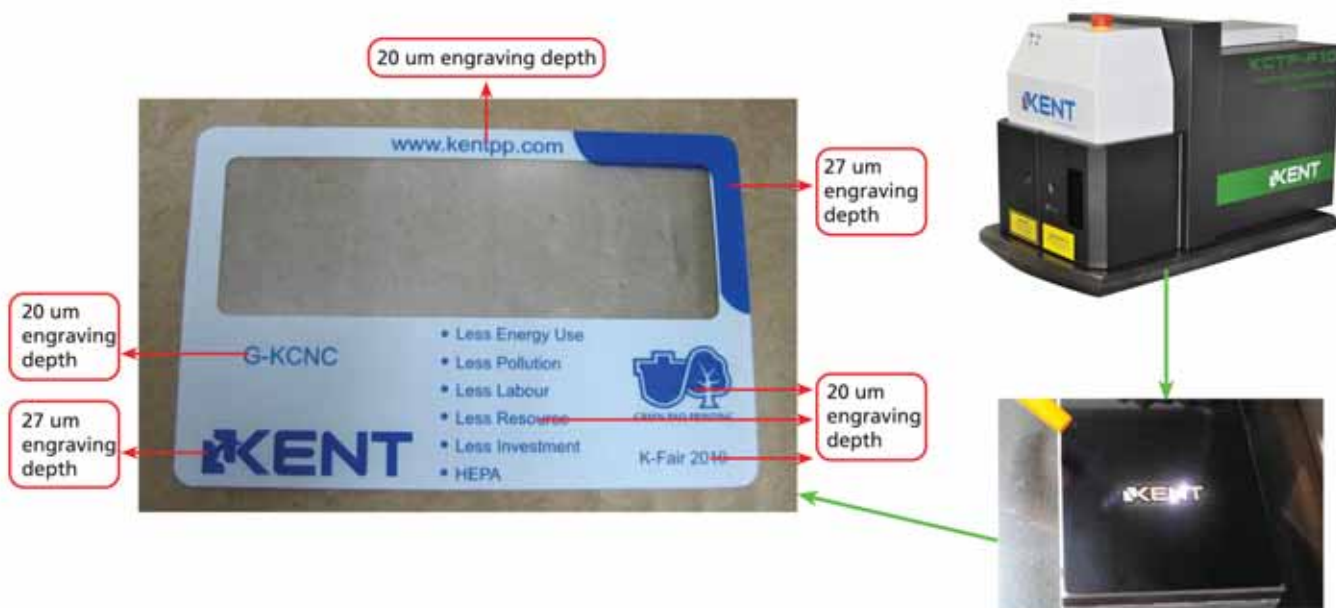
\* Plate life time parameter bases on objective factors (e.g. image size / mesh dots, image resolution, ink type / pigment size/density and ink cup condition)

### ENGRAVING DEPTH : 14 to 30 micron (variable)



#### Multi-images engraving

Allow different image depth on same plate for 1 short print instead of multi-print steps.



[www.kentpp.com](http://www.kentpp.com)

**KENT ENGINEERING CO. LTD.**

Blk. 2, 4/F., Wah Sing Ind. Bldg., 12-14 Wah Sing St., Kwai Chung, N.T. Hong Kong.  
Tel. : (852) 2424 1899 Fax : (852) 2480 4197 Email : info@kent.com.hk

**KENT ENGINEERING (GAO YAO) CO. LTD.**

(Zhaoqing)	Tel : (86) 0758-88512 888	Email : kentgy@kentchina.com
(Dongguan)	Tel : (86) 0769-8777 2010	Email : kentsg@kentchina.com
(Tianjin)	Tel : (86) 022-2795 8926	Email : kenttj@kent-pp.com.cn
(Wuxi)	Tel : (86) 0510-8522 0330	Email : kentsh@kent-pp.com.cn

